

Proctor Creek –
North Avenue Basin
(PNA)
Conceptual Visioning Plan

March 28, 2011
Parks and Greenspace
Conference

PNA Study Area



North Avenue

Joseph E. Boone Blvd.

Martin Luther King Blvd.

Northside Drive

Joseph E. Lowery

Interstate 20

Topography



- Streams
- 25 Foot State Mandated Buffer
- 75 Foot City Mandated Buffer

- Study Area
- Higher Elevation
- Lower Elevation



The PNA Study Area Has:

Continual and Repeated Flooding Issues

- Sewers Built Above Road Elevations
- Houses Built Below Road Elevations
- Fewest Acres of Planned Greenspace (NPU-L)
- A Declining Population
- Some of the Highest Crime Rates in City of Atlanta
- Some of the Lowest Occupancy Rates in City of Atlanta



The PNA Study Area Has:

- A Strong, Vibrant Community
- Many Cultural and Historic Resources
- Proximity to the Atlanta University Center & GA Tech
- Is Surrounded by Potentially Strong Contributors

GA Tech

GA Dome

GWCC

Downtown Atlanta

Castlebury Hill

Marietta Street to North

BeltLine

Maddox Park



Study Area Potential

The PNA Study Area Potential Includes:

- Prime location
- Wealth of foundations eager to get involved
- Supportive non-profit enterprises – mission specific
- Political will for improvements in area
- Attention of various City departments and other supportive authorities
- Eager State and Federal entities
- Unparalleled redevelopment opportunities



Unparalleled Opportunities



The **PNA** coalition consists of:

- National Non-Profits: American Rivers & The Conservation Fund
- Local Non-Profits: Park Pride, The West Atlanta Watershed Alliance (WAWA), The Metro Atlanta Urban Watershed Institute (MAUWI), The Community Improvement Association Inc. (CIA), ECO-Action, The English Avenue Neighborhood Association, The Vine City Health and Housing Ministry, Inc.
- Professional Consultants: MacTech - BeltLine planners for sub-area 10, Perkins+Will - national planning consultants, Eberly & Associates - local storm water management, TSW - local planning consultants
- Governmental Agencies (Team has Attempted to Coordinate with):
The Atlanta Development Authority (ADA),
The Department of Parks and Recreation and Cultural Affairs \ (DPRCA), The RCRA Division of the EPA, The City of Atlanta Department of Watershed Management, The City of Atlanta Department of Planning & Community Development, Neighborhood Planning Unit (NPU) L, Councilman Ivory Lee Young, The Fulton County Department of Health and Wellness

PNA Project Timeline

- Wednesday April 7, 6PM -Kick-Off Meeting Steering Committee (Mable Thomas Office)
- Tuesday April 20, 6PM - Second Steering Committee Meeting (Mable Thomas Office)
- Tuesday, May 5, 6PM - Third Steering Committee Meeting (Mable Thomas Office)
- Tuesday, May 18 - Fourth Steering Committee Meeting (Mable Thomas Office)
- Tuesday, June 1 - Fifth Steering Committee Meeting (Tour)
- Thursday, June 3 – Park Pride Met with City Planning and EPA – Project Briefing
- Tuesday, June 15, 6PM - Sixth Steering Committee Meeting (Neighborhood Union Health Center)
- Wednesday, July 6, 6PM - Seventh Steering Committee Meeting (Neighborhood Union Health Center)
- Friday, July 9, 10:30 to 1:00 PM – ARC Meeting Regarding Proctor Creek (Community Improvement Association Regarding Proctor Creek)
- Friday, July 16, 10:30 AM – Park Pride met with English Avenue Neighborhood Association to discuss public outreach options/strategy
- Tuesday, July 20, 6PM, Eighth Steering Committee Meeting (NUHC)
- Saturday, July 31, 10:00 AM – First Public Meeting (NUHC)
- Wednesday, August 4, 6PM – Ninth Steering Committee Meeting (NUHC)
- Saturday, August 7, 10AM – Second Public Meeting (English Avenue Neighborhood Association)
- Thursday, August 12 and Friday, August 13, Park Pride Staff Reaches out to Churches in Study Area(packets with letter)
- Wednesday, September 1, 6PM – Ninth Steering Committee Meeting (NUHC)
- Monday, September 13, Mable Thomas at English Avenue School – Meeting About Park/Building
- Friday, September 17, Peg Kohring from Conservation Fund Visits Study Area
- Saturday, September 18, 10AM – Third Public Meeting (Design Workshop) at C.I.A. Office
- Wednesday, October 6, 6PM – Tenth Steering Committee Meeting
- Thursday, October 7, 6PM – Fourth Public Meeting/‘Visioning Dinner (English Avenue Neighborhood Association)
- Saturday, October 23, 10AM – Fifth Public Meeting/Prelim Design Review (NUHC)
- Wednesday, November 3, Eleventh Steering Committee Meeting (NUHC)
- Saturday, November 20, Sixth Public Meeting (Plan Review) in conjunction with Town Hall Meeting.
- Wednesday, December 8, Twelfth Steering Committee Meeting (NUHC)
- End of December – Committee to Review Draft Report
- Mid-January – Comments due to Design Team
- Late-January – Publish Document

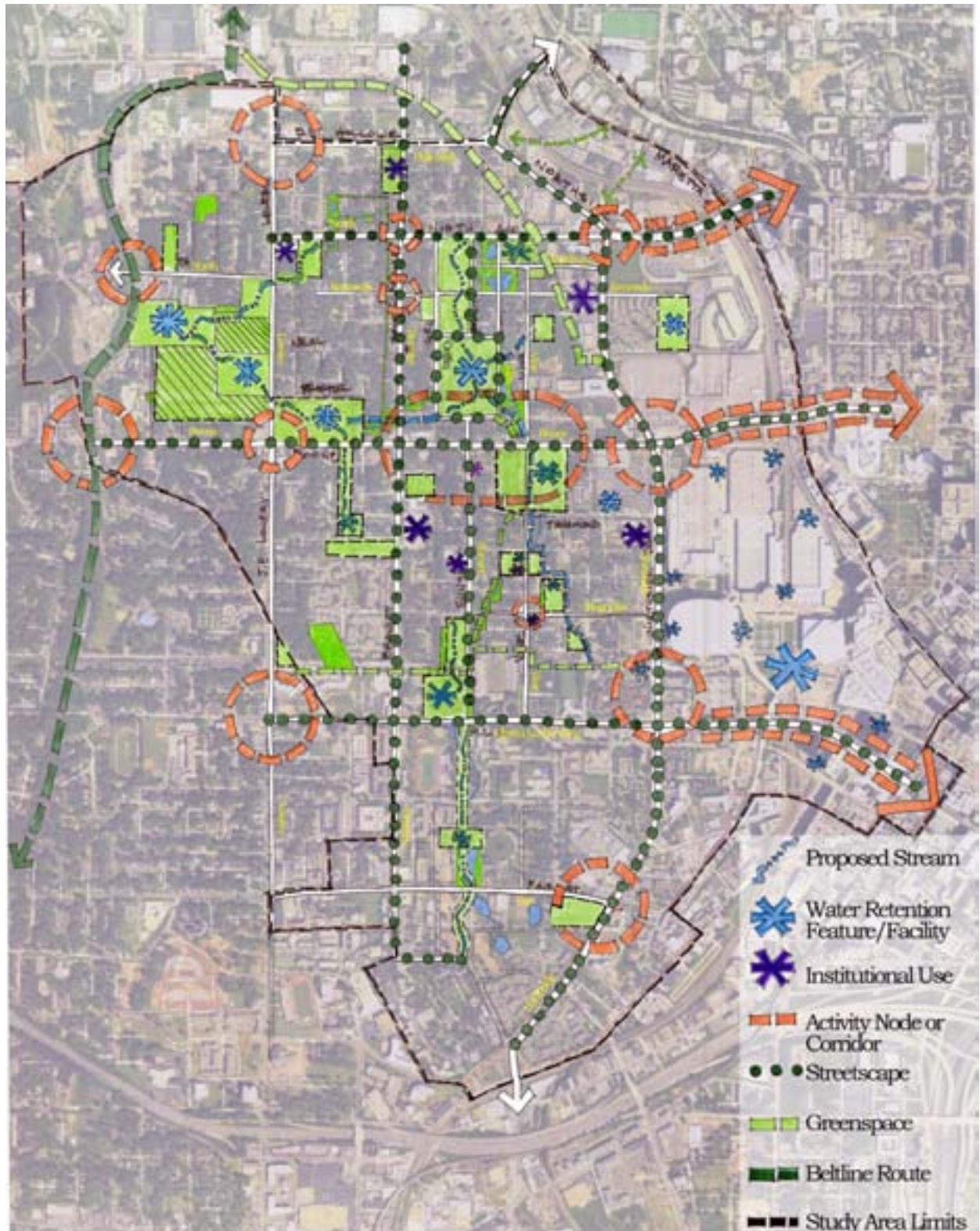
Overarching Guidelines

Developed at First Public Meeting 7/31
Reviewed/Expanded at Meetings: 8/4, 8/7 & 9/1

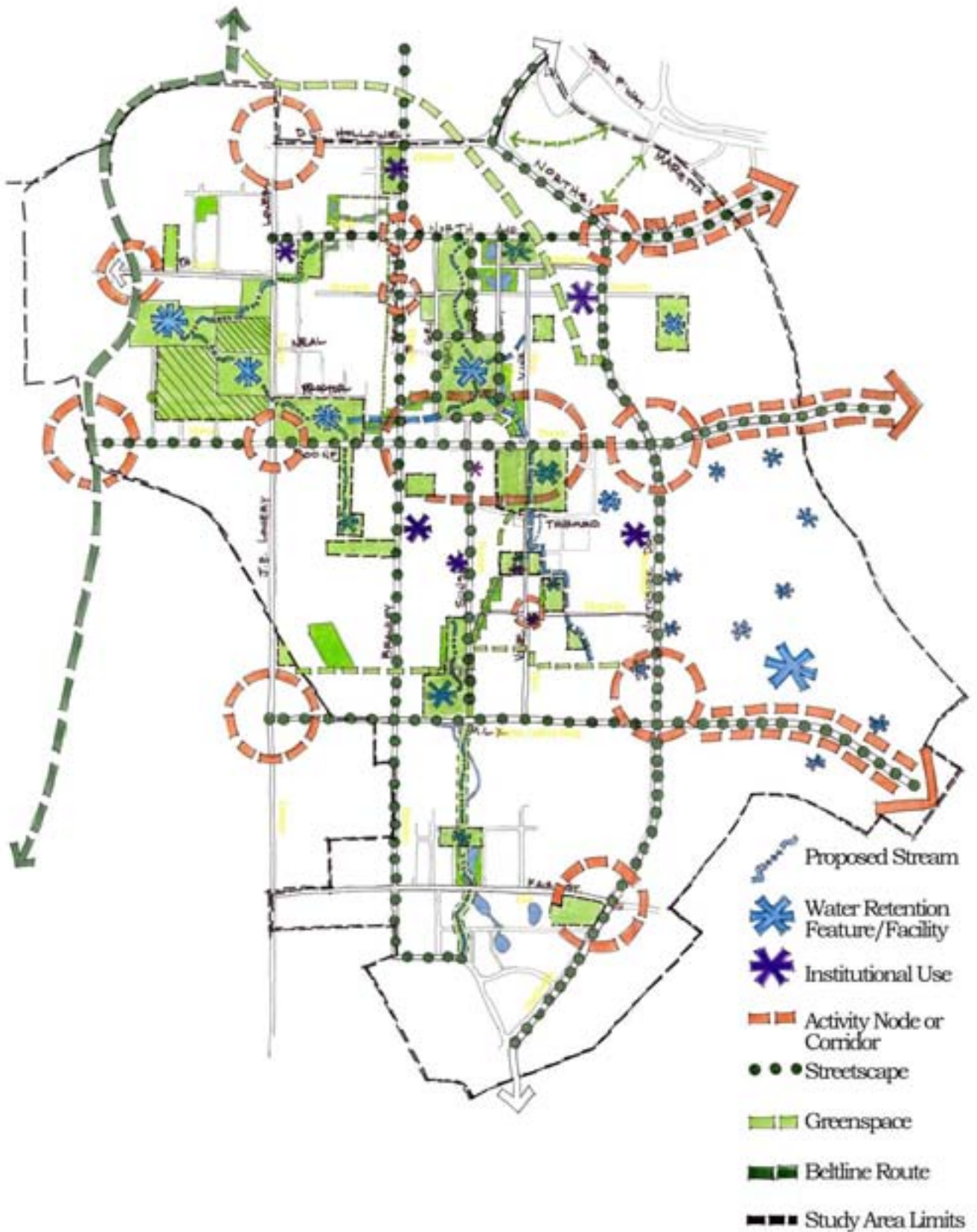
Through a series of public meetings, community members developed their Overarching Goals for the PNA project. Those 11 goals are as follows:

- 1. Mitigate and/or eliminate flooding in the PNA study area.
- 2. Displace as few residents as possible and provide those displaced with equal property in neighborhood, preferably within 1 or 2 blocks of their current residence.
- 3. Utilize previous studies as basis for this study.
- 4. Create aesthetically pleasing and useable green space for the community by acquiring 20% of the study area as public green space.
- 5. Create Green Jobs and community ownership as a means of engaging residents in future efforts.
- 6. Promote the economic vitality of the PNA study area.
- 7. Promote pedestrian connectivity within the neighborhoods that make up the PNA study area and to adjacent attractions such as Downtown and the BeltLine.
- 8. Provide a broader spectrum of housing options for neighbors and new residents.
- 9. Reinforce and enhance the cultural and historic integrity and physical fabric of the neighborhoods and the larger PNA community.
- 10. The restoration of as much of a natural Hydrologic System to Proctor Creek as reasonably possible.
- 11. The creation of a State of the Art, Green Technology, Global Community Center at the Historic English Avenue School site.

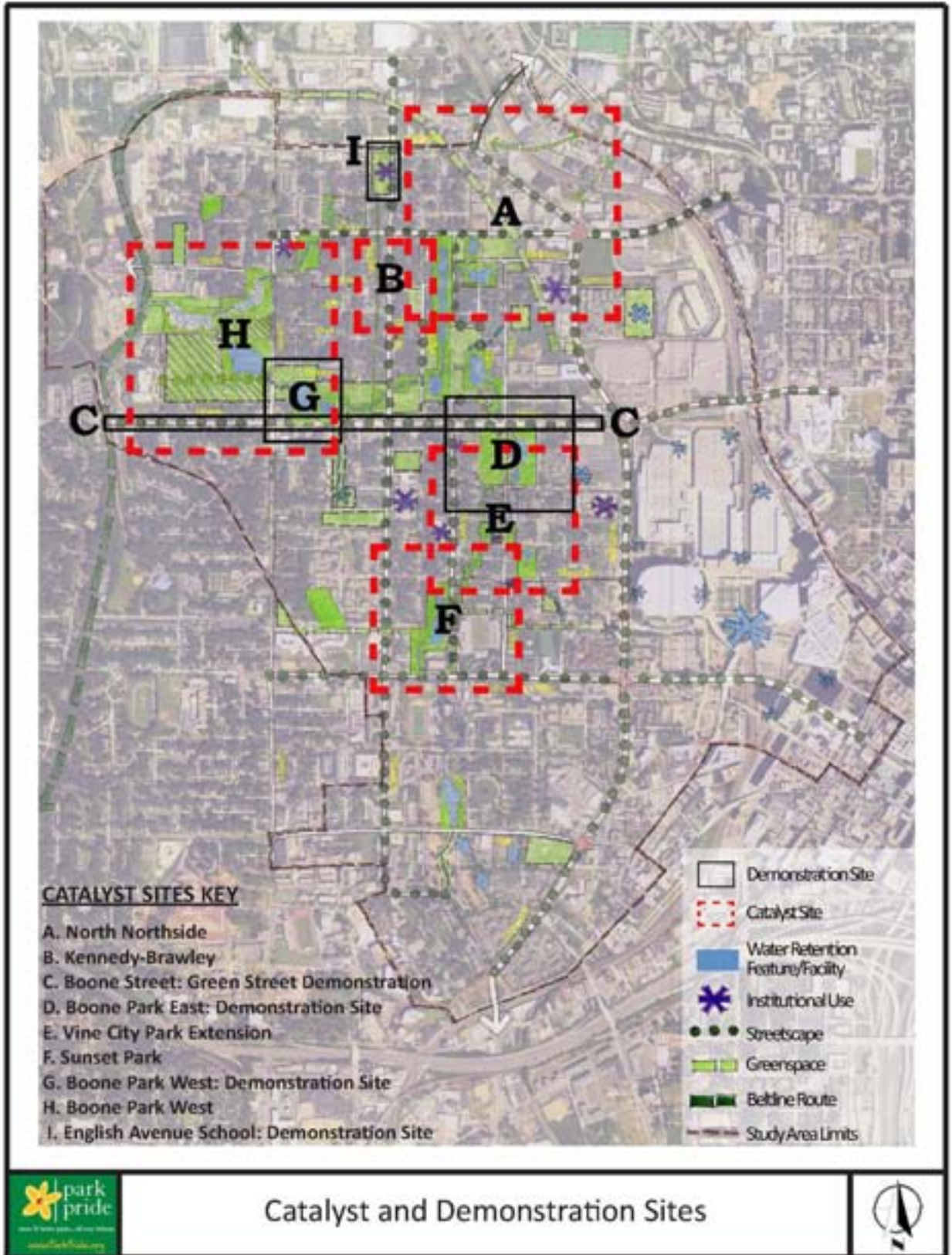
Conceptual Plan



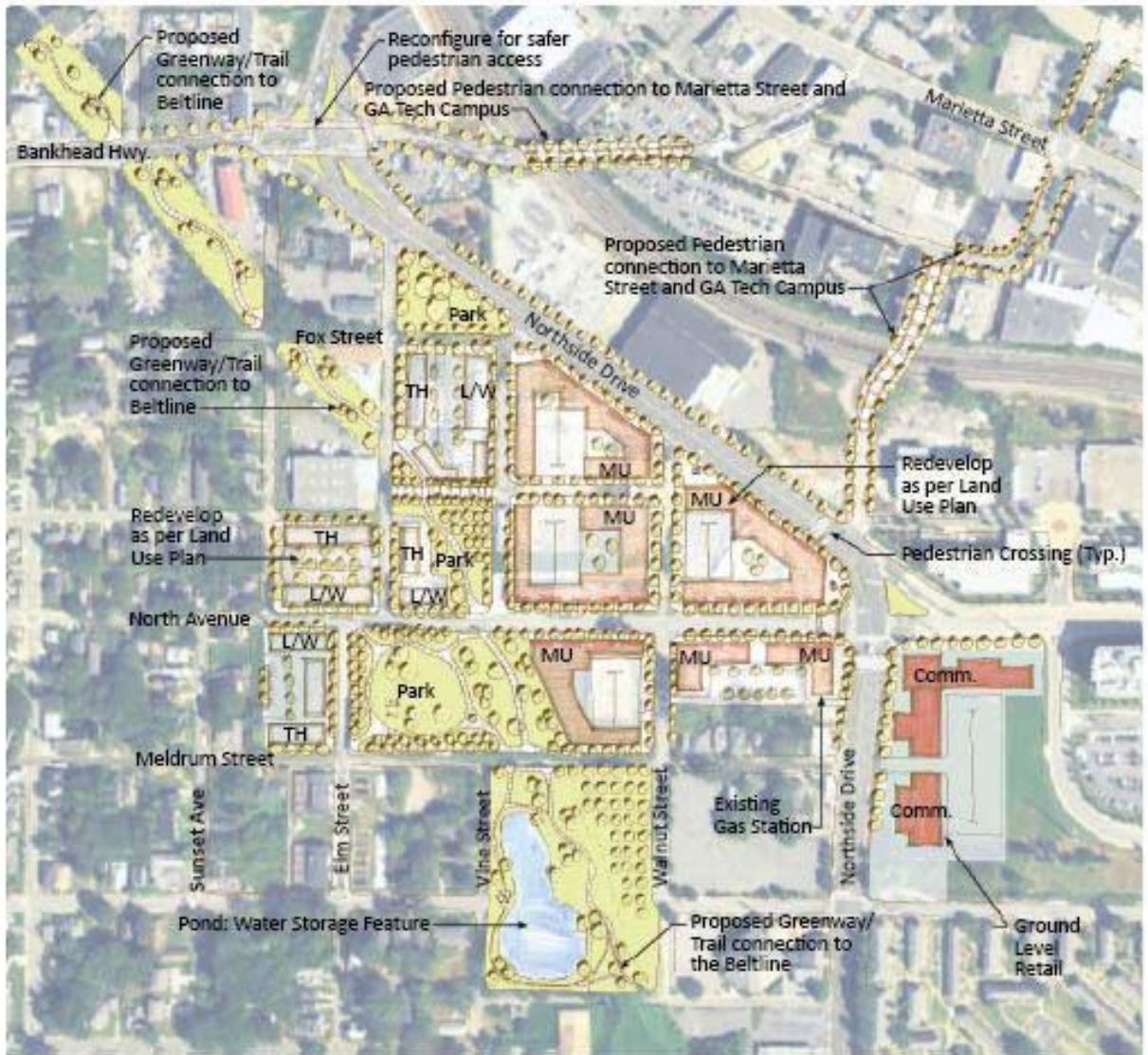
Conceptual Plan



Catalyst Sites



North Ave. and Northside Dr.



- Mixed-Use (MU)
- Single Family Residential (SF)
- Town Homes (TH)
- Commercial Use (COMM)
- Proposed Green Infrastructure
- Proposed Water Infrastructure

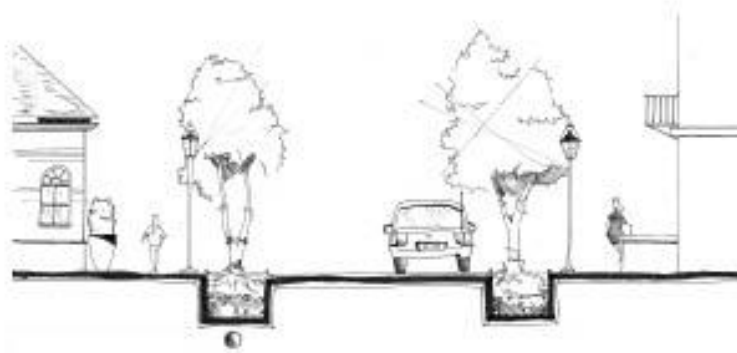
Kennedy St. and Brawley St.



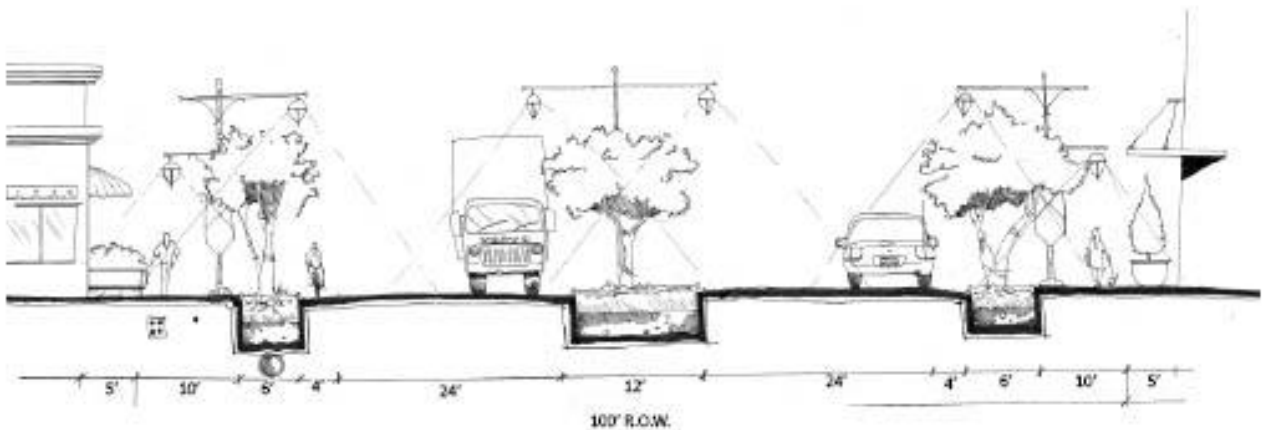
- Mixed-Use (MU)
- Single Family Residential (SF)
- Multi Family (MF)
- Proposed Green Infrastructure
- Proposed Water Infrastructure

Green Street Project

Conceptual Approach to Streetscape Projects



Proposed typical section for residential streets



Proposed typical section for:

- Boone Street
- Martin Luther King Jr. Boulevard
- Joseph E. Lowery Boulevard
- Donald Lee Hollowell Boulevard

Boone Park East



- Mixed-Use (MU)
- Single Family Residential (SF)
- Town Homes (TH)
- Commercial Use (COMM)
- Civic Use
- Proposed Green Infrastructure
- Proposed Water Infrastructure

Vine City Park



- Mixed-Use (MU)
- Single Family Residential (SF)
- Town Homes (TH)
- Commercial Use (COMM)
- Civic Use
- Proposed Green Infrastructure
- Proposed Water Infrastructure

Sunset Avenue Park



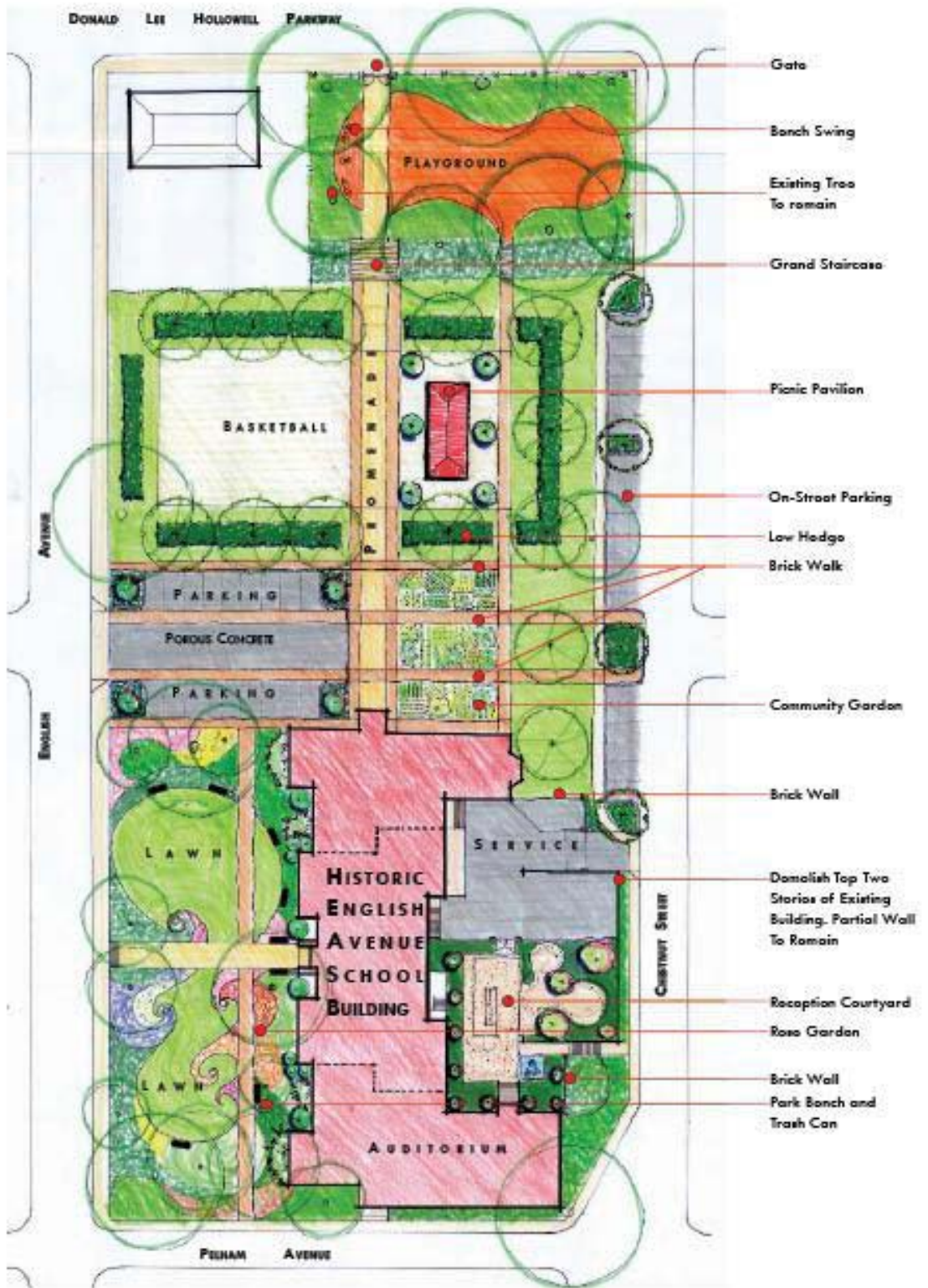
- Mixed-Use (MU)
- Single Family Residential (SF)
- Town Homes (TH)
- Commercial Use (COMM)
- Civic Use
- Proposed Green Infrastructure
- Proposed Water Infrastructure

Boone Park West



- Multi Family (MU)
- Single Family Residential (SF)
- Town Homes (TH)
- Proposed Green Infrastructure
- Proposed Water Infrastructure

English Avenue School



Next Steps

- **Study Groups:** It has been requested that Park Pride offer small group sessions so that residents can learn and understand the details of the recommendations included in the PNA Visioning Plan.
- **Funding:** Needed to create team to shepherd project through funding opportunities, design development and implementation of demonstration projects
- **Implementation Team:** Develop group of neighbors to explore funding for priority projects, will include seeking various approvals and continued community outreach.
- **Project Implementation:** 2-3 years (approximate) begin implementation of first demonstration project

Contact

- Walt Ray, RLA
Park Pride
walt@parkpride.org
404.432.9320
233 Peachtree Street
Suite 1600
Atlanta, GA 30303

