



**LITTLE NANCY CREEK PARK**  
*conceptual vision, 2008*

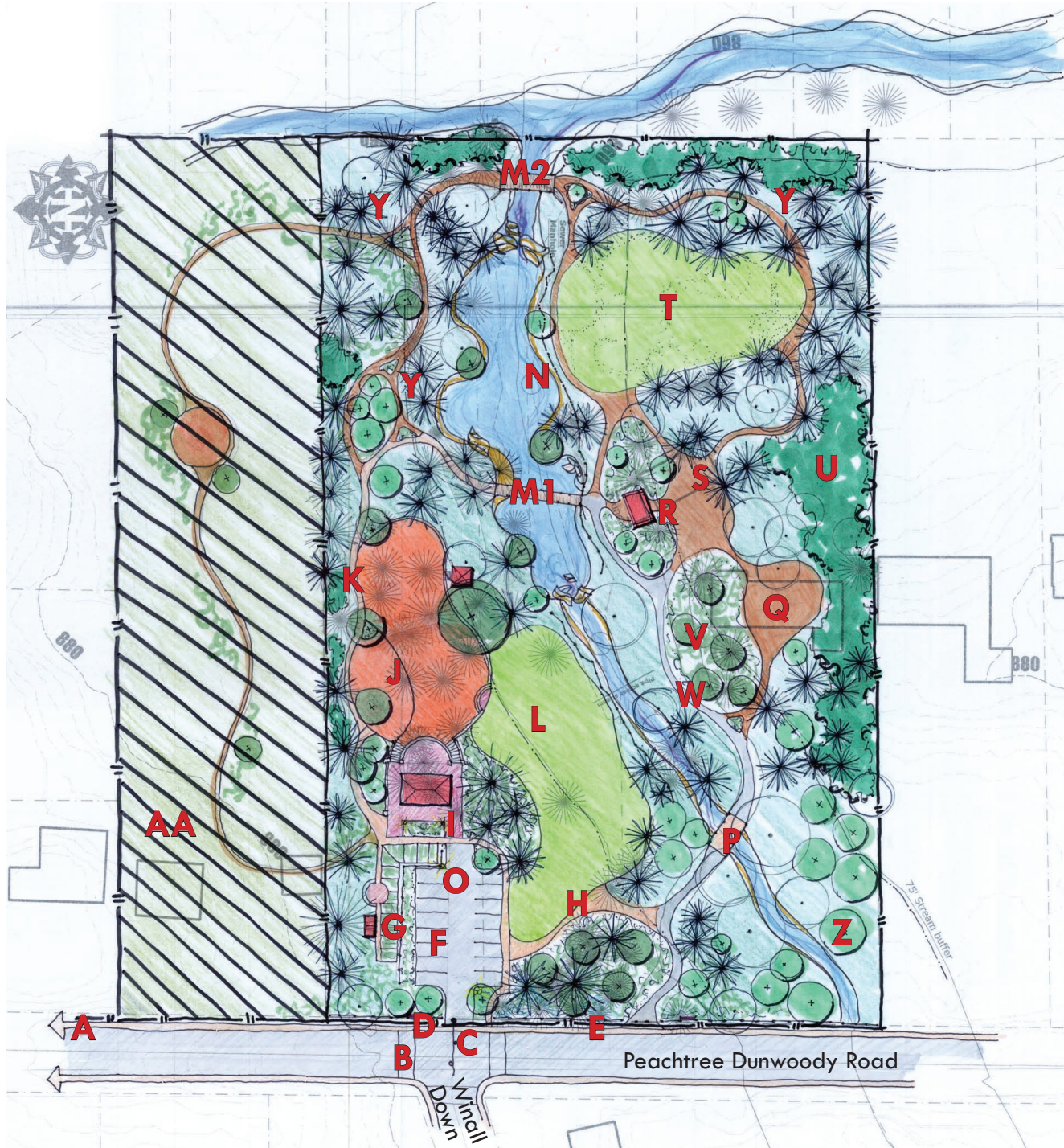
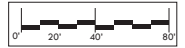


# LITTLE NANCY CREEK PARK

CONCEPTUAL VISION

May 12, 2009

@ Peachtree - Dunwoody & Winall Down



## KEY

A Sidewalk	I Pavilion	P Enhance Existing Bridge	Y Woodland Restoration
B Crosswalk	J Playground	Q Overlook	Z Tree Canopy Restoration
C Flashing Light	K Soft Surface Path	R Children's Cottage	
D Signage	L Open Lawn	S Overlook	
E Split rail fencing	M1, M2 Bridge	T Meadow	
F Parking	N Streambank Restoration & Hydrology Improvements	U Vegetative Screening	AA Potential Land Acquisition
G Community Garden	O Lighting in Parking and Pavilion	V Landscaping	
H Hard Surface Path		W Soft Surface Path	

Key	Item	Cost	Description	Volunteer Opportunity Yes / No	Possible Funding Source
A	Sidewalk	High \$\$\$	Along Peachtree Dunwoody Road, Connect sections of sidewalk that are missing or deficient	No	Federal, State, Check ARC's TIP/RTP
B	Crosswalk	Low \$	Install painted (thermal tape), reflective crosswalk at Winall Down and Peachtree Dunwoody Road	No	Federal, State, Check ARC's TIP/RTP, CoA Public Works???
C	Flashing Light	Medium \$\$	Install flashing light to current MUTCD standards at Winall Down and Peachtree Dunwoody Road, mast arm	No	Federal, State, Check ARC's TIP/RTP, CoA Public Works???
D	Signage	Low \$	Design and install entrance signage at pedestrian and vehicular entrances, combine 'Park Rules' signage at	No	City of Atlanta Department of Parks, Recreation and Cultural Affairs (DPRCA), Micro-Grant
E	Split Rail Fencing	Medium \$\$	Construct split rail fencing at back of sidewalk (proposed) along Peachtree Dunwood Road	Yes, Would Save Labor Costs	Micro-Grant, Community Fundraiser
F	Parking	High \$\$\$	Grade, drain, and pave with permeable pavers space for 15-20 vehicles. Provide area for turn-around.	No	Community Grant, Foundations, Local Business Organizations
G	Community Garden	Low \$	Adopt through Park Pride's Adopt a Community Garden program. Construct raised beds from masonry or cedar	Yes	Micro-Grant, Community Fundraiser
H	Hard Surface Path	Medium \$\$	Design and construct paved paths 6'-8' wide on south side of park, connecting parking (proposed) with pavilion,	No	Community Grant, Foundations, Local Business Organizations
I	Pavilion	Medium \$\$	Design and build signature architectural element in park. Pavilion with flagstone paving and small plaza with	No	Community Grant, Foundations, Local Business Organizations
J	Playground	High \$\$\$	Prepare site with permitted grading plan and professional earthwork team. Work with playground designers (possibly	Possibly, after grading and site work is	Community Grant, Foundations, Local Business Organizations
K	Soft Surface Path	Low \$	Volunteers to perform minor grading (with shovels) to hold gravel or slate chip path system along stream and into	Yes	Volunteer, Micro-Grant
L	Open Lawn	Medium \$\$	Minor grading and tree removal (must be permitted and recompensed on-site). Lay sod. To be mown regularly and		
M1	Bridge	Medium to High	Once streambank is restored or at least designed, construct boardwalk style bridge over widest area of proposed stream.	No	Community Grant, Foundations, Local Business Organizations
M2	Bridge	Medium \$\$	Construct pedestrian bridge over creek at west side (downstream end) of park. Can be rustic in style.		



Key	Item	Cost	Description	Volunteer Opportunity Yes / No	Possible Funding Source
N	Streambank Restoration and Hydrology	High \$\$\$	After study is complete, implement improvements to hydrology along creek. Should include streambank	No	Federal, City of Atlanta Department of Watershed Management may have funding?????
O	Lighting in Parking and Pavilion	Medium \$\$	Low-level, bollard style lights at parking/pavilion area. Timed to go off at 10PM.	No	Community Grant, Foundations, Local Business Organizations
P	Enhance Existing Bridge	Low to Medium \$	Add railings to existing bridge, clean surface and/or enhance surface of bridge.	No	Micro-Grant, Community Fundraiser
Q	Overlook	Low \$	Once grading is complete, provide benches, landscaping, and interpretive signage at high-point of park. Consider	Yes	Micro-Grant, Community Fundraiser
R	Children's Cottage	Medium \$\$	On historic foundation, construct children-sized play cottage. Themed for magical wonderland/children-	Not at construction (probably), but for	Micro-Grant, Community Fundraiser
S	Uncovered Picnic	Low \$	Construct picnic tables, benches, and trash receptacles and install over mulch (pine straw?) surface. Add minor	Yes	Micro-Grant, Community Fundraiser
T	Meadow	Medium \$\$	Manage area to discourage invasive species and to encourage meadow-appropriate native species, especially	Yes	Micro-Grant, Community Fundraiser
U	Vegetative Screening	Low \$	Plant native, tall-growing, evergreen shrubs along key areas at perimeter of park property to screen views to residential	Yes	Micro-Grant, Community Fundraiser
V	Landscaping	Low to Medium	At key locations along paths and trails, consider adding native species of shrubs, groundcovers, and perennial	Yes	Micro-Grant, Community Fundraiser
W	Soft Surface Path	Low \$	Volunteers to perform minor grading (with shovels) to hold gravel or slate chip path system along stream and into	Yes	Micro-Grant, Community Fundraiser
Y	Woodland Restoration	Low \$	Remove invasive species and introduce native species to enhance appearances and wildlife habitat	Yes, Multiple	Volunteer, Park Pride
Z	Tree Canopy Restoration	Low \$	Plant native trees to create high canopy of tree cover. Will need trees to be planted if any pines are cut during	Yes, Multiple	Volunteer, Park Pride Tree Grant, Recompense



Key	Item	Cost	Description	Volunteer Opportunity Yes / No	Possible Funding Source
<b>FUTURE EXPANSION</b>					
AA	Potential Land Acquisition	Very High \$\$\$\$\$	Purchase lot next to (south side of) park for future uses and extra wildlife habitat.	No	Community Grant, Foundations, Local Business Organizations
BB	Meditation Garden	Low to Medium	Provide benches of natural materials in circular pattern. Plant moss or low-growing plants in center with a	Yes	Micro-Grant, Community Fundraiser
CC	Soft Surface Meditation Trail	Low to Medium	Volunteers to perform minor grading (with shovels) to hold gravel or slate chip path system along stream and into	Yes	
<b>STUDIES AND DESIGN</b>					
	Construction Documents - South Side	Medium \$\$	Before any construction can begin on south side of park, pay consultant to prepare working drawings for entire area	No	Community Grant, Foundations, Local Business Organizations
	Hydrology Study/Streambank Rest.	Medium \$\$	Commission study to determine what improvements can be made to stream health and water quality.	No	Community Grant, Foundations, Local Business Organizations



## PARK PRIDE

### Mission Statement

To lead and inspire action for parks and greenspace.

### Vision Statement

To create a world-class park system in Atlanta.

**Park Pride** is a nonprofit group that leads and inspires action for parks and greenspace. In 2006, we coordinated over 20,000 hours of volunteer work in Atlanta parks, developed new conceptual master plans for 5 parks, helped start over a dozen friends of the park groups, and led the successful charge to have the Fulton County Board of Commission reverse its decision to sell six Sandy Springs Parks to the highest bidder. **Park Pride** continued to work with community organizations and grassroot advocates to support the creation of the Atlanta BeltLine, which will create more than 1,000 acres of new parks and 33 miles of trails. Our annual conference serves as the signature event in our work to create a world class park system in Atlanta.



more & better parks... all over Atlanta

***For more information, contact:***  
Walt Ray, RLA  
Director of Park Visioning  
Park Pride  
675 Ponce de Leon Ave., NE  
8th Floor  
Atlanta, Georgia 30308  
[www.parkpride.org](http://www.parkpride.org)